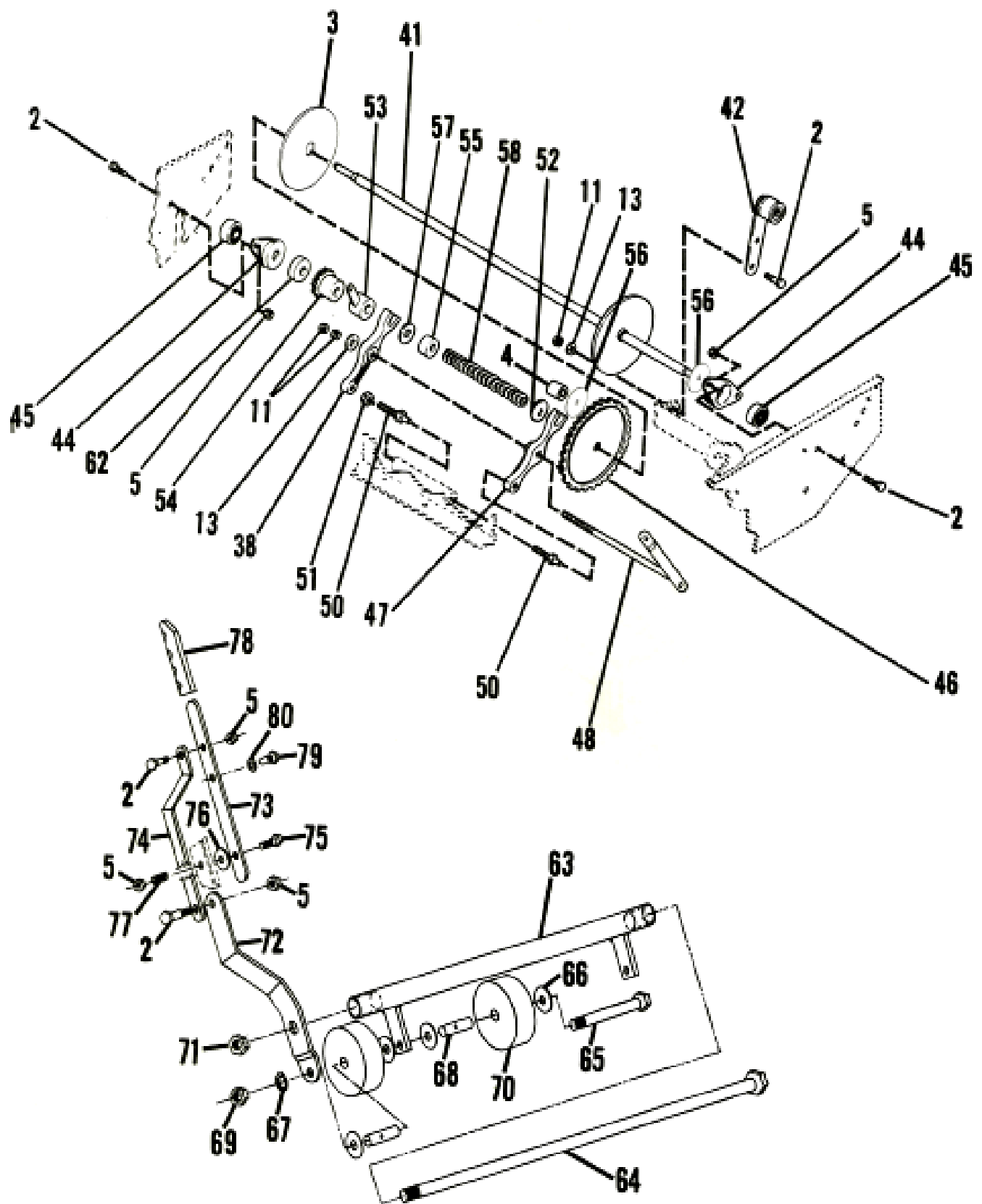


## HR25 PARTS LIST FIG. 1

2	TC90207	BOLT 5/16-18 x 1 3/4	73	TC22245	QHA LEVER
3	TC12012	LINING	74	TC22443	QHA UPPER BRACKET
4	TC12065	SPACER TUBE	75	TC90370	HEX BOLT
5	TC90186	HEX LOCK NUT	76	TC11491	FIBER WASHER
11	TC90303	NUT 1/4 - 28	77	TC11494	SPRING
13	TC90055	WASHER SAE 1/4	78	TC11360	GRIP
38	TC20204	SMALL CLUTCH FORK	79	TC90473	LOCK PIN
41	TC42045	DRIVE SHAFT	80	TC90395	EXTERNAL WASHER
	TC51055	DRIVE SHAFT ASSY			
42	TC37400	DRIVE CHAIN IDLER			
44	TC22170	BEARING HOLDER			
	TC51090	BEARING HOLDER ASSY			
45	TC11275	BEARING			
46	TC51175	DRIVE SPROCKET 39T			
47	TC20203	LARGE CLUTCH FORK			
48	TC42065	CLUTCH ADJUSTER WELDT.			
50	TC22098	CLUTCH ADJUSTER SCREW			
51	TC51040	STEADY REST ASSY. W/ BEARING			
54	TC18009	9T SPROCKET			
55	TC51060	COLLARY ASSY.			
56	TC12060	LARGE HARD WASHER			
57	TC12055	SMALL HARD WASHER			
58	TC12070	CLUTCH SPRING			
62	TC51066	COLLAR ASSY W/ FLAT			
63	TC42025	SHRUB BAR WELDMENT			
64	TC42026	AXLE SHAFT			
65	TC57125	CASTER AXLE			
66	TC11325	WASHER			
67	TC90417	EXTERNAL WASHER			
68	TC11206	SPANNER BUSHING			
69	TC90130	HEX NUT 3/8			
70	TC12095	CASTER WHEEL			
	TC51095	CASTER WHEEL ASSY			
71	TC90455	HEX LOCK NUT			
72	TC22244	QHA LOWER BRACKET			

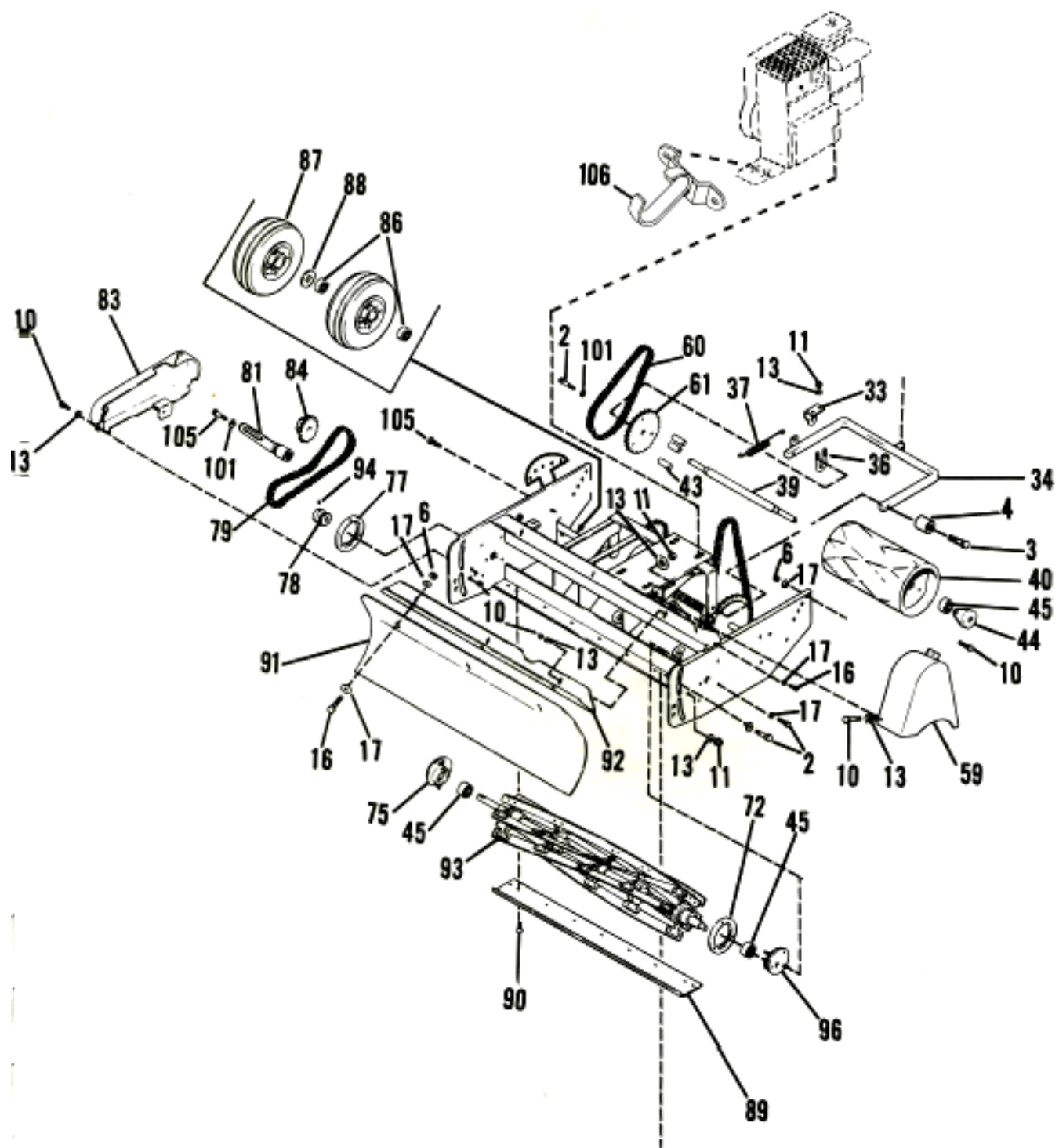
HR25 FIG. 1



## HR25 PARTS LIST FIG. 2

1	TC42053	MAIN FRAME WELD
2	TC90370	BOLT 5/16 - X 1 - 3/4
3	TC20505	PIVOT BOLT
4	TC21262	PIVOT BUSHING
6	TC90399	NUT #10 -24
10	TC90099	BOLT 1/4 - 28 x 1/2
11	TC90303	NUT 1/4- 28
13	TC90055	WASHER SAE 1/4
16	TC90411	BOLT #10-24
17	TC90010	WASHER #10
33	TC37267	ROLLER CLAMP
34	TC42050	ROLLER YOKE
36	TC37266	U-BOLT
37	TC12085	ROLLER SPRING
39	TC22096	ROLLER SHAFT
40	TC50500	ROLLER 9"
43	TC12025	SPROCKET SPACER
44	TC22170	BEARING HOLDER
45	TC11275	BEARING
59	TC47404	DRIVER CHAIN GUARD
60	TC11272	ROLLER DRIVE CHAIN
61	TC12020	30T ROLLER SPROCKET
72	TC31207	BEARING RETAINER RING (LH)
75	TC57102	BEARING RETAINER, REEL (RH)
77	TC31208	BEARING RETAINER RING (RH)
78	TC11405	11T REEL SPROCKET
79	TC11330	REEL CHAIN
81	TC37401	REEL CHAIN IDLER
83	TC47402	REEL CHAIN GUARD
84	TC11406	SPROCKET
86	TC12030	WHEEL BEARING
87	TC18201	WHEEL
88	TC12080	WHEEL SPACER
89	TC31410	25 CUTTER BAR
90	TC90405	CUTTER BAR SCREW
91	TC47378	GRASS SHIELD WELDT
92	TC31222	GRASS SHIELD ANGLE
93	TC51070	25" 5 BLADE REEL
	TC51077	25" 7-BLADE REEL
94	TC90432	SET SCREW 5/16 -24
96	TC50355	BEARING RETAINER (LH)
101	TC90188	WASHER 5/16
105	TC90206	BOLT 5/16 - 18 x 3/4
106	TC42101	BALE HOOK

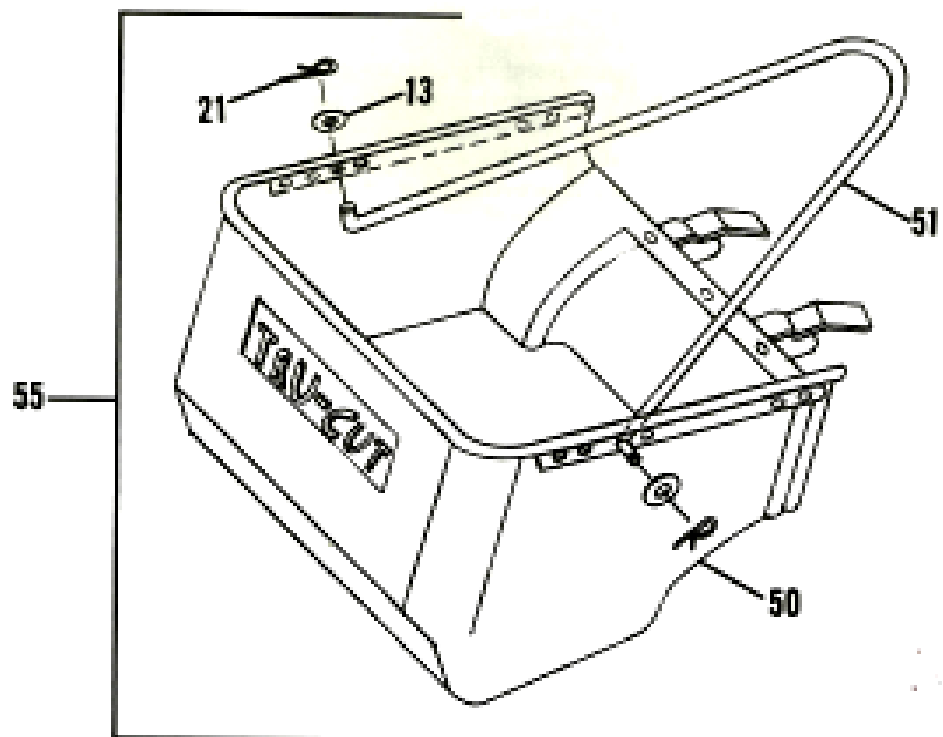
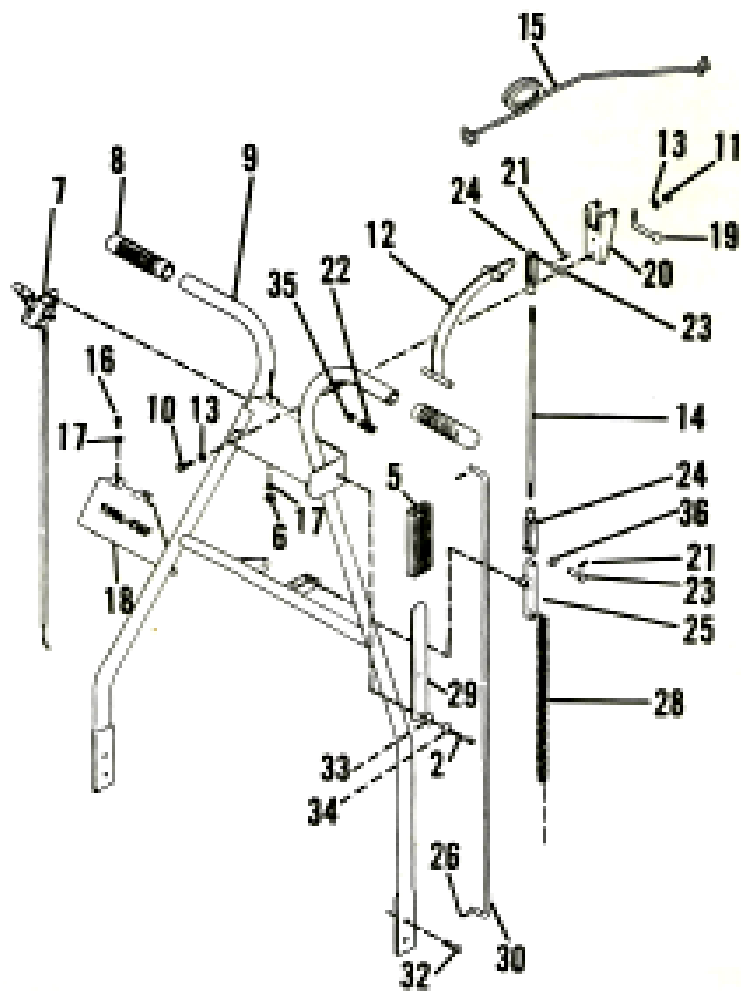
106



## HR25 PARTS LIST FIG. 3

2	TC90370	BOLT 5/16 - 18 x 1 - 3/4
5	TC11360	GRIP
6	TC90399	HEX NUT 10-24
7	TC18104	HONDA THROTTLE CONTROL
	TC18102	B & S THROTTLE CONTROL
8	TC11239	GRIP
9	TC42013	HANDLE WELDMENT RD
10	TC90099	BOLT 1/4-28 x 1/2
11	TC90303	NUT 1/4-28
12	TC42085	ROLLER LIFT LEVER
13	TC90055	WASHER SAE 1/4
14	TC22062	ROLLER LIFT ROD
15	TC11493	RETURN SPRING
16	TC90411	BOLT #10-24
17	TC90010	WASHER #10
18	TC52018	COVER PLATE W/ DECAL
19	TC11198	CLEVIS PIN 3/8
20	TC31421	CHANNEL, LIFT BRACKET
21	TC90037	COTTER PIN
22	TC11494	SPRING
23	TC11186	15/16 CLEVIS PIN
24	TC11194	CLEVIS
25	TC47455	ROLLER ACTUATOR LINK
26	TC90514	HAIR PIN
28	TC12088	ROLLER LIFT CHAIN
29	TC22218	CLUTCH ROD LEVER
30	TC22058	CLUTCH ROD
32	TC90206	BOLT 5/16-18 x 3/8
33	TC90226	WAVY WASHER
34	TC11478	FLAT WASHER
35	TC90186	NUT 5/16-18
36	TC90188	WASHER, 5/16
50	TC51018	POLY GRASS CATCHER
51	TC22150	BALE
55	TC57163	POLY GRASS CATCHER ASSY.
	TC57196	GALV GRASS CATCHER ASSY.

HR25 FIG. 3



## **SAFETY INSTRUCTIONS**

### **Training**

1. Read the operating and service instruction manual carefully. Be thoroughly familiar with the controls and the proper use of the equipment.
2. Never allow children to operate a power mower.
3. Keep the area of operation clear of all persons, particularly small children, and pets.

### **Preparation**

1. Thoroughly inspect the area where the equipment is to be used and remove all stones, sticks, wires, bones, and other foreign objects.
2. Do not operate the equipment when barefoot or wearing open sandals. Always wear substantial footwear.
3. Check the fuel before starting the engine. Do not fill the gasoline tank indoors, when the engine is running or while the engine is still hot. Wipe off any spilled gasoline before starting the engine.
4. Disengage the self-propelled mechanism or drive clutch on units so equipped before starting the engine (motor).
5. Never attempt to make a wheel height adjustment while the engine (motor) is running.
6. Mow only in daylight or in good artificial light.
7. Always be sure of your footing, keep a firm hold on the handle and walk; never run.
8. Always wear safety goggles.

### **Operation**

1. Do not change the engine governor settings or over-speed the engine.
2. Do not put hands or feet near or under rotating parts. Keep clear of the discharge opening at all times.
3. Stop the blade(s) when crossing gravel drives, walks, or roads.
4. After striking a foreign object, stop the engine (motor), remove the wire from the spark plug, thoroughly inspect the mower for any damage, and repair the damage before restarting and operating the mower.
5. If the equipment should start to vibrate abnormally, stop the engine (motor) and check immediately for the cause. Vibration is generally a warning of trouble.
6. Stop the engine (motor) whenever you leave the equipment. Before cleaning the mower housing, and when making any repairs or inspections.
7. When cleaning, repairing, or inspecting, make certain the blade and all moving parts have stopped. Disconnect the spark plug wire, and keep the wire away from the engine to prevent accidental starting.
8. Do not run the engine indoors.
9. Shut the engine (motor) off and wait until the blade comes to a complete stop before removing the grass catcher.
10. Mow across the face of slopes, never up and down. Exercise extreme caution when changing direction on slopes. Do not mow excessively steep slopes.
11. Never operate the mower without proper guards in place.

### **Maintenance and Storage**

1. Keep all nuts, bolts, and screws tight to be sure the equipment is in safe working condition.
2. Never store the equipment with gasoline in the tank inside a building where fumes may reach an open flame or spark. Allow the engine to cool before storing in any enclosure.
3. To reduce fire hazards, keep the engine free of grass, leaves, or excessive grease.