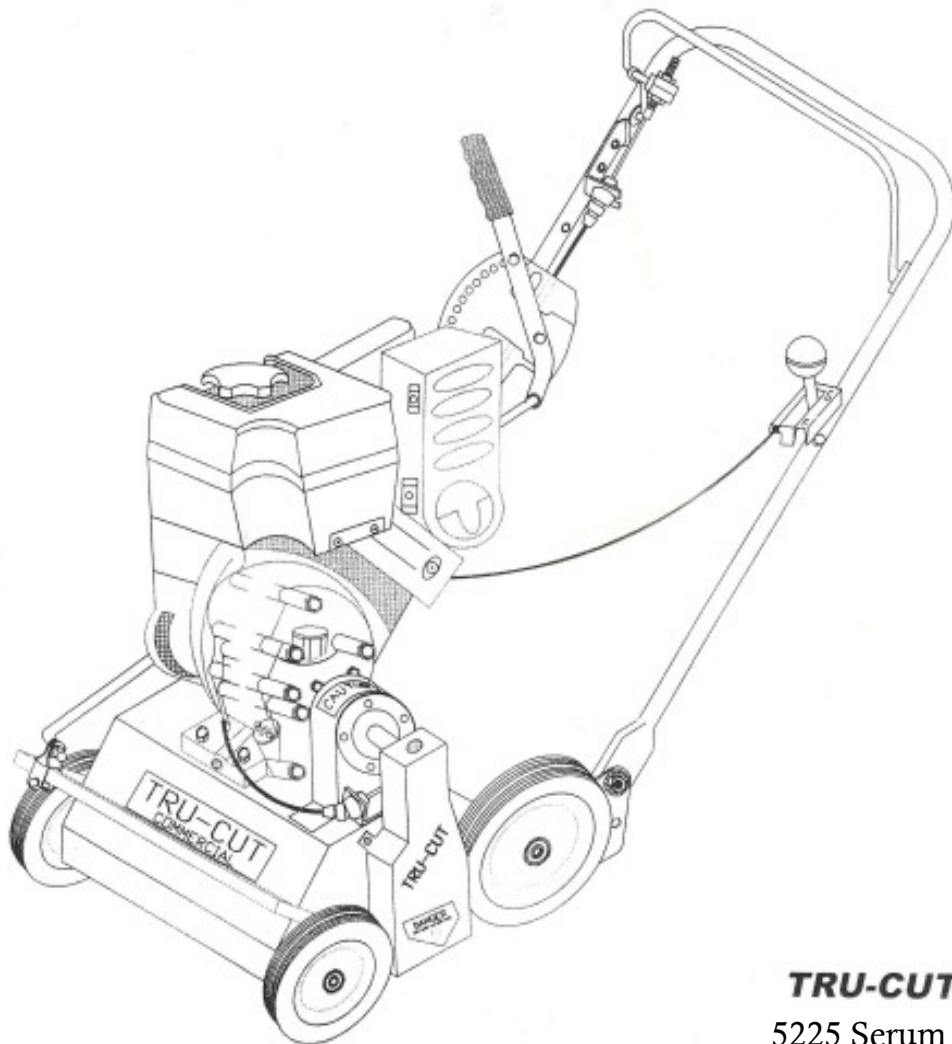




DEALER SET-UP INSTRUCTIONS & PARTS LISTS

DETACHER MODELS : D1842B850, & D1842H55



TRU-CUT, Inc.
5225 Serum Plant Rd
Thorntown, IN 46071
765-436-2496

SETUP

STEP 1

ATTACHED HANDLE (REF.#1) INSIDE FRAME PLATES (REF.#2) WITH THE FOLLOWING 4 SETS OF 5/16—18 SERRATED FLANGE NUTS, 5/16-18 x 3/4 LONG BOLTS WITH WASHERS.

(REF.#3) INSERT BOLT THRU TOP HOLE IN HANDLE AND TOP HOLE -A- (SEE CROSS SECTIONAL VIEW) ON EACH SIDE PLATE. "SNUG" NUTS UP TO PLATE BY TURNING BOLT WITH WASHERS.

(REF.#4) INSERT BOLT THRU BOTTOM HOLE IN HANDLE AND HOLE -B- (SEE CROSS SECTIONAL VIEW) ON EACH SIDE PLATE. "TIGHTEN" BOLTS TO SECURE HANDLE IN HIGH POSITION.

HANDLE CAN BE ATTACHED IN LOW POSITION BY USING HOLE - C - (SEE CROSS SECTIONAL VIEW)

STEP 2

QUICK HEIGHT ADJUSTMENT PLATE (REF.#5) IS ALREADY ATTACHED TO HANDLE IN THE "HIGH" POSITION IF HANDLE IS SET IN THE "LOW" POSITION THE QUICK HEIGHT ADJUSTMENT PLATE MUST BE MOVED. ATTACH QUICK HEIGHT ADJUSTMENT ASSEMBLY (REF.#5) TO HANDLE 1/4 x 1 1/2 BOLTS & NUTS.

(REF.#6) INSERT BOLT THRU FRONT SLOT OF PLATE, THEN THRU HOLE - G - OF HANDLE, "SNUG" UP TO HANDLE.

(REF.#7) INSERT BOLT THRU BACK SLOT AND HOLE - E - THEN "SNUG" BUT AGAISNT HANDLE.

STEP 3

ATTACH QUICK HEIGHT ADJUSTMENT ROD (REF. #8) USING COTTER PINS AND WASHERS.

(REF.# 9) INSERT ROD END INTO BRACKET ASSEMBLY (REF.#10) PLACE WASHER ON AND INSERT "COTTER PIN" (REF.#23) ON OTHER SIDE OF BRACKET. RETAIN BY BENDING LEADS. (SEE CROSS SECTIONAL VIEW) (REF.# 9)

(REF.# 11) INSERT ROD END INTO QUICK HEIGHT ADJUSTMENT LEVER. (REF.#12) PLACE WASHER ON AND INSTERT "COTTER PIN" (REF.#24) ON OTHER SIDE OF LEVER. RETAIN BY BENDING LEADS. (SEE CROSS SECTIONAL VIEW) (REF.# 12) "TIGHTEN" NUTS TO SECURE SLOT BOLTS FOR THE FINAL PLATE POSITION. (LEVER SHOULD BE IN THE FIRST HOLE IN FRONT OF PLATE) (REF.# 13)

STEP 4

ATTACH THROTTLE CONTROL TO HANDLE WITH 1/4 x 1 1/2 BOLD AND NUT.

(REF.#15) INSERT 1/4 x 1 1/2 BOLT THRU HANDLE HOLE & THROTTLE. "TIGHTEN" NUT AGAISNT THROTTLE.

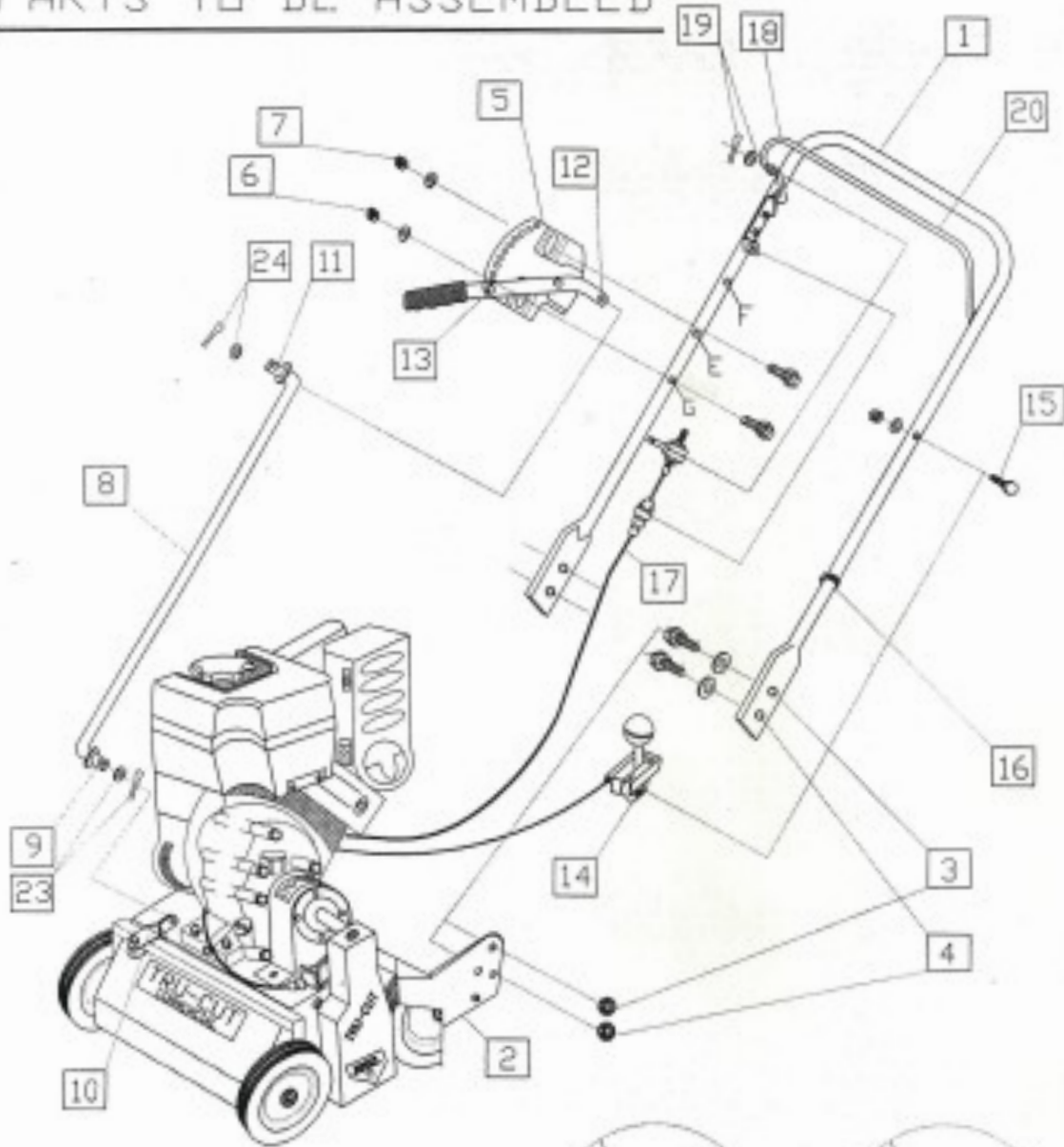
(REF.#16) HOLD THROTTLE CABLE TO HANDLE WITH BODINE CLIP.

STEP 5

ATTACH "CLUTCH CABLE" (REF.#17) TO "BALE" (REF.#18) ON HANDLE.

(REF.#19) INSERT "SWIVEL SHAFT" THRU BALE HOLE, ADD "SPACER WASHER" THEN INSERT "COTTER PIN" (RETAIN BY BENDING LEADS) *TEST CLUTCH CABLE* BY PULING BALE BACK TO HANDLE THEN RE-

PARTS TO BE ASSEMBLED

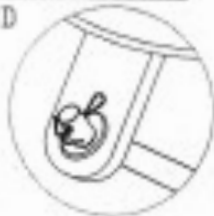


Cross Sectional View

QHA ROD



Ref. #9



Ref. #12



HIGH



LOW

Cross Sectional View

HANDLE POSITION

READY TO "DETHATCH"

HANDLE IN "LOW" POSITION

QHA PLATE

is
BOLTED

to
E & G

LEVER
at

LOW CUT

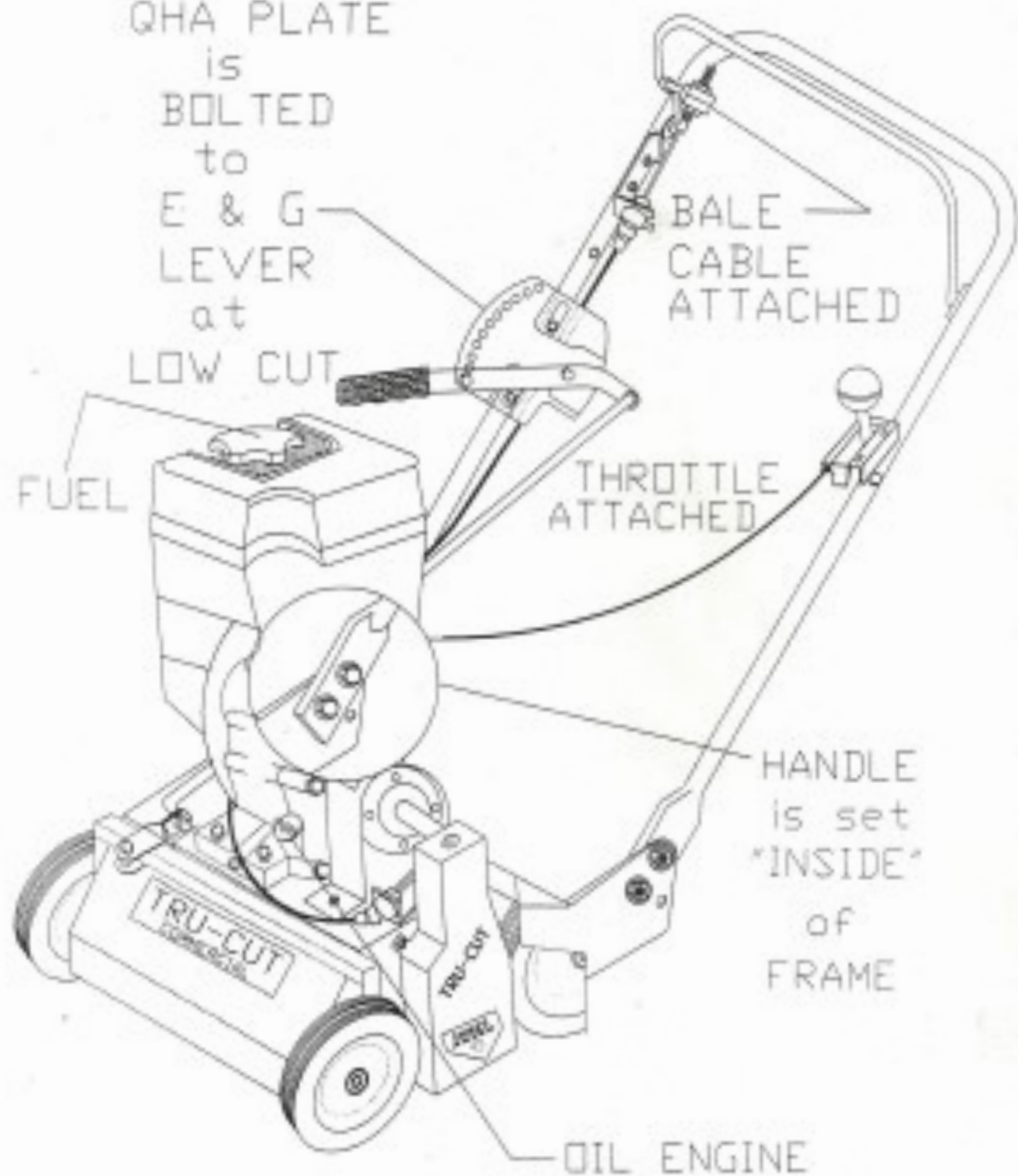
BALE
CABLE
ATTACHED

THROTTLE
ATTACHED

FUEL

HANDLE
is set
"INSIDE"
of
FRAME

OIL ENGINE



PARTS BREAKDOWN - DETACHER

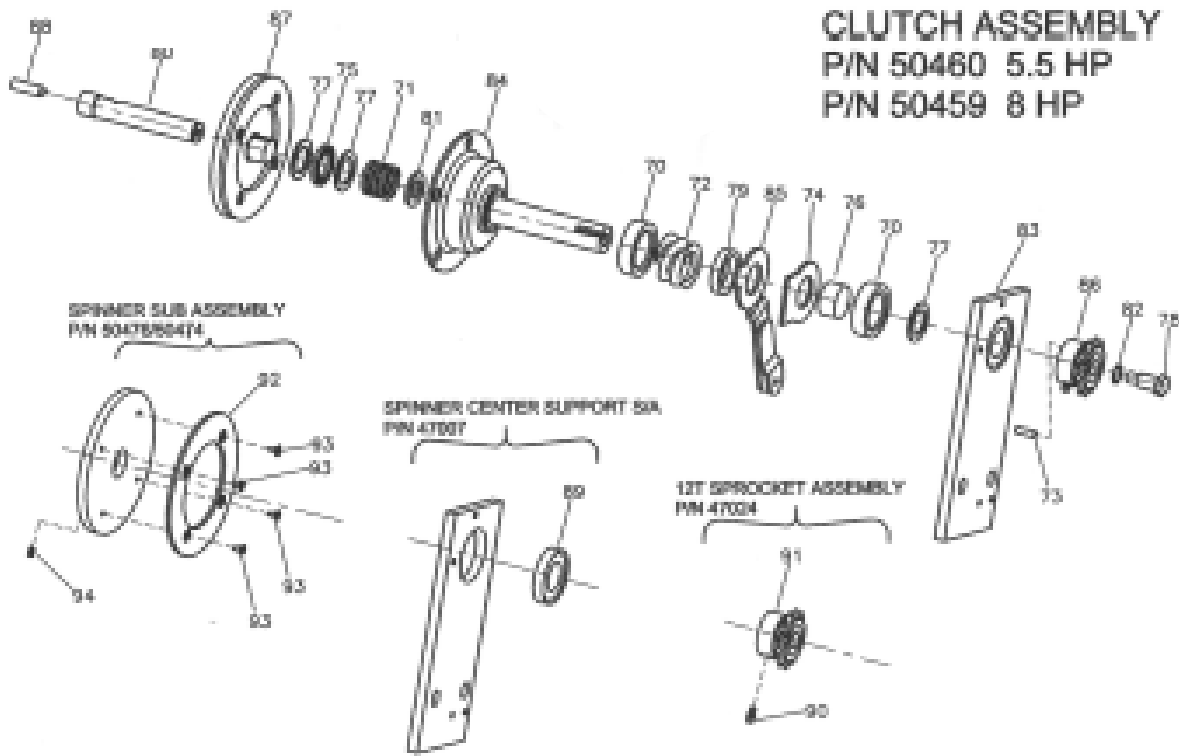
D1842H55/D1842B850/D184B80

#	PN	DESCRIPTION	#	PN	DESCRIPTION
1	TC11153	DANGER DECAL	33	TC52075	WHEEL ASSY 8" FRONT (2EA)
2A	TC11250	CLEVIS PIN	34	TC52080	WHEEL ASSY 10" REAR (2EA)
2B	TC11243	BODINE CLIP (4EA)	35	TC90010	SAE WASHER PLATED #10 (4EA)
3	TC11255	CONNECTING LINK	36	TC90036	COTTER PIN 3/32 x 1/2
4	TC11314	WASHER 1x 1/2 (12EA)	37	TC90037	COTTER PIN 3/32 x 3/4
5	TC11535	REEL BEARING (2EA)	38	TC90055	1/4 SAE WASHER PLATED (8EA)
6	TC11882	FIBRE WASHER (2EA)	39	TC90095	1/4-28 HEX NUT PLATED (10EA)
7	TC18137	THROTTLE CONTROL 5.5HP	40	TC90099	1/4-28 x 1/2 PLATED HHCS (3EA)
	TC18138	THROTTLE CONTROL 8HP	41	TC90100	1/4-28 x 5/8 PLATED HHCS (13EA)
8	TC18171	TEMSOIN CABLE ASSY	42	TC90122	SAE WASHER 3/8
9	TC23090	3/8 WASHER (4EA)	43	TC90140	3/8-16 x 1 1/4 HHCS (2EA)
10	TC23130	WHEEL FRONT AXLE	44	TC90153	3/8-16 LOCK NUT NYLON INSERT (2EA)
11	TC23131	DEFLECTOR HOLDER ROD	45	TC90186	5/16-16 HLN PLATED NYLON (6EA)
12	TC23143	CABLE/SPRING BRACKET	46	TC90188	5/16 SAE WASHER PLATED (16EA)
13	TC23163	REEL DRIVE CHAIN	47	TC90206	5/16-18 x 3/4 HHCS PLATED (4EA)
14	TC23165	BEARING RETAINER LH	48	TC90574	5/16-18 x 5/8 HHCS PLATED (2EA)
15	TC23168	EXTENSION SPRING	49	TC90211	5/16-18 x 1 1/2 BOLT 5.5HP
16	TC23180	STAND OFFS (2EA)		TC90646	5/16-18 x 1 1/2 BOLT 8HP
17	TC23199	ENGINE SPACER (4EA)	50	TC90226	WAVY WASHER 7/16
18	TC27271	BEARING RETAINER RH	51	TC90356	5/16-18 HEX JAM NUT
19	TC31207	BEARING RET RING LH	52	TC90380	5/16-18 HEX FLANGE LOCK NUT (4EA)
20	TC31208	BEARING RET RING RH	53	TC90410	1/4 EXTERNAL LOCK WASHER (6EA)
21	TC31305	ROD BRACKET QHA 5.5HP	54	TC90516	1/4-28 LOCK NUT NYLON INSERT (2EA)
	TC47038	ROD BRACKET QHA 8HP	55	TC90538	5/16-24 HEX NUT
22	TC37424	REEL CHAIN IDLER	56	TC90571	1/4-28 x 2 1/4" HHCS (2EA)
23	TC47020	DECK WELD 5.5HP	57	TC90576	1/2-20 LOCK NUT (2EA)
	TC47026	DECK WELD 8HP	58	TC90578	1/2-13 HEX SERRATED FLG NUT (2EA)
24	TC47023	SPROCKET-HUB WELD	59	TC90596	1/2-13 x 2 3/4 HHCS (2EA)
25	TC47030	QHA BAR WELD	60	TC90650	5/16-24 ACORN NUT
26	TC50431	BRAKE FRAM WELD			
27	TC50452	DEFLECTOR			
28	TC50454	REEL SUB ASSY			
29	TC50460	CLUCTH ASSY 5.5HP			
	TC50459	CLUCTH ASSY 8HP			
30	TC50463	SPINNER GUARD W/ DECAL			
31	TC50465	CHAIN GUARD S/A			
32	TC50473	HANDLE ASSY 5.5HP			
	TC50472	HANDLE ASSY 8HP			

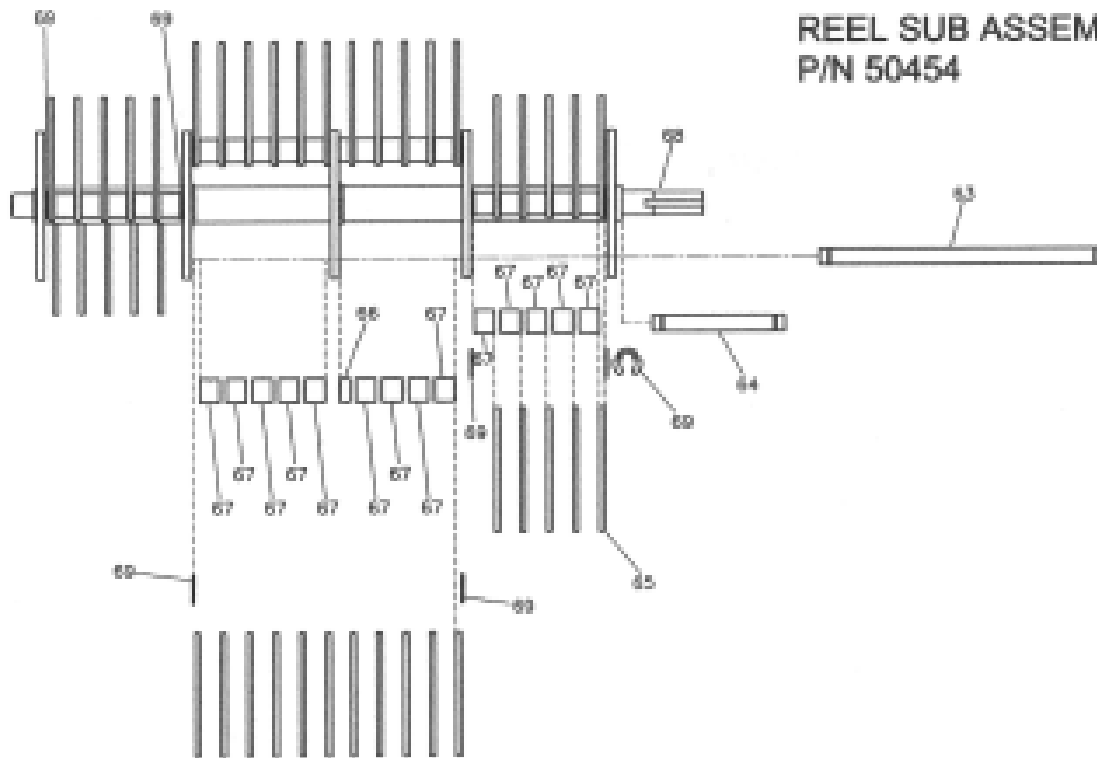
D1842H55/D1842B850/D1842B80 (CONT'D)

61	TC90651	5/16-24 x 2" FULL THREAD	94	TC90432	SET SCREW
62	XXXXX	ENGINE HONDA/B&S		N/S	SPINNER PLATE-HUB WELD (5.5HP/8HP)
63	TC23124	BLADE HOLDER SHAFT - LONG (2EA)	96	TC23142	HANDLE TUBE 5.5HP
64	TC23126	BLADE HOLDER SHAFT - SHORT (4EA)		TC23145	HANDLE TUBE 8HP
65	TC23128	FLAIL BLADE (42EA)	97	TC23188	SWIVEL INSERT
66	TC27239	SPACER(2EA)	98	TC28075	BALE
67	TC27267	SPACER(38EA)	99	TC28076	BALE BUSHING (2EA)
68	TC47002	REEL SHAFT-PLATE WELD	100	TC28160	CABLE HOLDER/BALE STOP
69	TC90616	E RING(12EA)	101	TC50468	QHA CONTROL S/A 5.5HP
70	TC11215	THRUST BEARING (2EA)		TC50470	QHA CONTROL S/A 8HP
71	TC11216	COMPRESSION SPRING 5.5HP	102	TC90010	SAE WASHER #10 (4EA)
	TC23144	COMPRESSION SPRING 8HP	103	TC90036	COTTER PIN
72	TC11222	SPRING	104	TC90055	1/4 SAE WASHER (4EA)
73	TC11355	KEY	105	TC90095	HEXT NUT (6EA)
74	TC23148	CAM PLATE	106	TC90180	BOLT (4EA)
75	TC23184	NEEDLE THRUSTING BRG	107	TC90410	EXTERNAL LOCK WASHER (4EACH)
76	TC23185	NEEDLE BEARING	108	TC11360	Q.H.A GRIP
77	TC23187	THRUST WASHER (3EA)	109	TC11490	QUICK ADJUST ROD
78	TC23190	SHOULDER BOLT	110	TC11494	SPRING
79	TC23198	SPACER RING	111	TC11491	FIBER BLADE WASHER
80	TC23201	EXTENSION SHAFT 5.5HP	112	TC23167	QHA LOCK 5.5HP
	TC23182	EXTENSION SHAFT 8HP		TC23177	QHA LOCK 8HP
81	TC23209	THRUST WASHER 3/4x1/8	113	TC23203	Q/A LEVER 5.5HP
82	TC23212	WASHER GAP ADJ		TC23197	Q/A LEVER 8HP
83	TC47007	SPINNER CTR SUPP S/A	114	TC31376	INDEX PLATE QHA
84	TC47015	CLUTCH HOUSING-OVER SHAFT ASSY	115	TC90037	COTTER PIN (2EA)
85	TC47022	CLUTCH ACTUATOR LEVER WELD	116	TC90122	3.8 SAE WASHER (4EA)
			117	TC90186	5/16-18 HLN PLATED NYLON
86	TC47024	12T SPROCKET S/A	118	TC90188	5/16 SAE WASHER (3EA)
87	TC50476	SPINNER S/A 5.5HP	119	TC90226	WAVY WASHER
	TC50474	SPINNER S/A 8HP	120	TC90370	5/16-18 x 1 3/4 HHCS
88	TC90648	SET SCREW 5.5HP	121	TC90395	EXTERNAL LOCK WASHER
	TC90647	SET SCREW 8HP	122	TC90473	LOCK PIN
89	TC11648	BEARING	123	TC90537	HEX BOLT
	TC23250	SPINNER CENTER SUPPORT	124	TC90541	5/16-24 x 3/4 HHCS
90	TC11204	ZERK FITTING	125	TC11143	TRU-CUT DECAL - BLACK
91	TC11386	DIFF. BEARING	126	TC11150	DECAL(DANGER, HANDS, FEET)
92	TC11219	CLUTCH LINING	127	TC11718	STEEL CAP
93	TC90421	RIVET(4EA)		N/S	CHAIN GUARD WELD

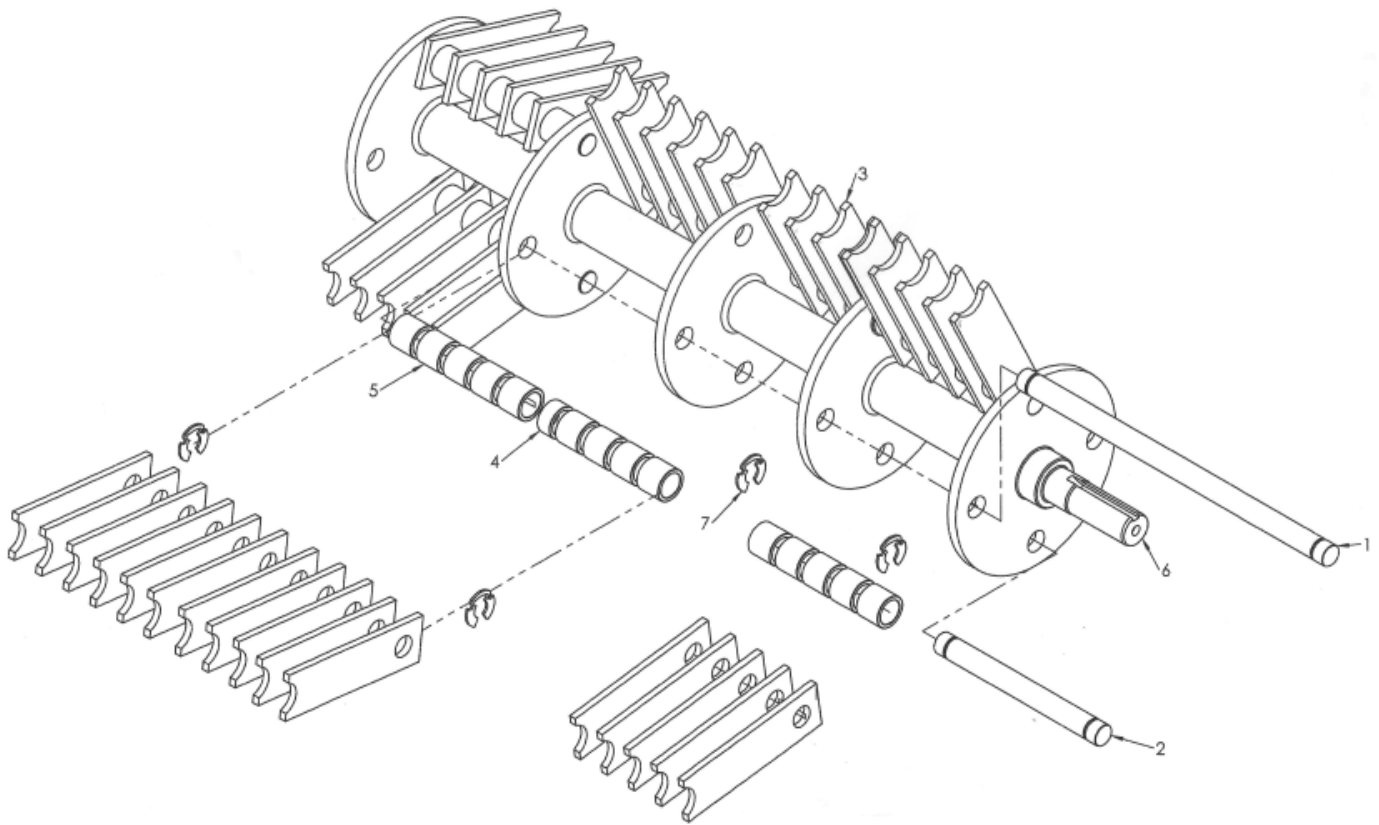
CLUTCH ASSEMBLY
 P/N 50460 5.5 HP
 P/N 50459 8 HP



REEL SUB ASSEMBLY
 P/N 50454



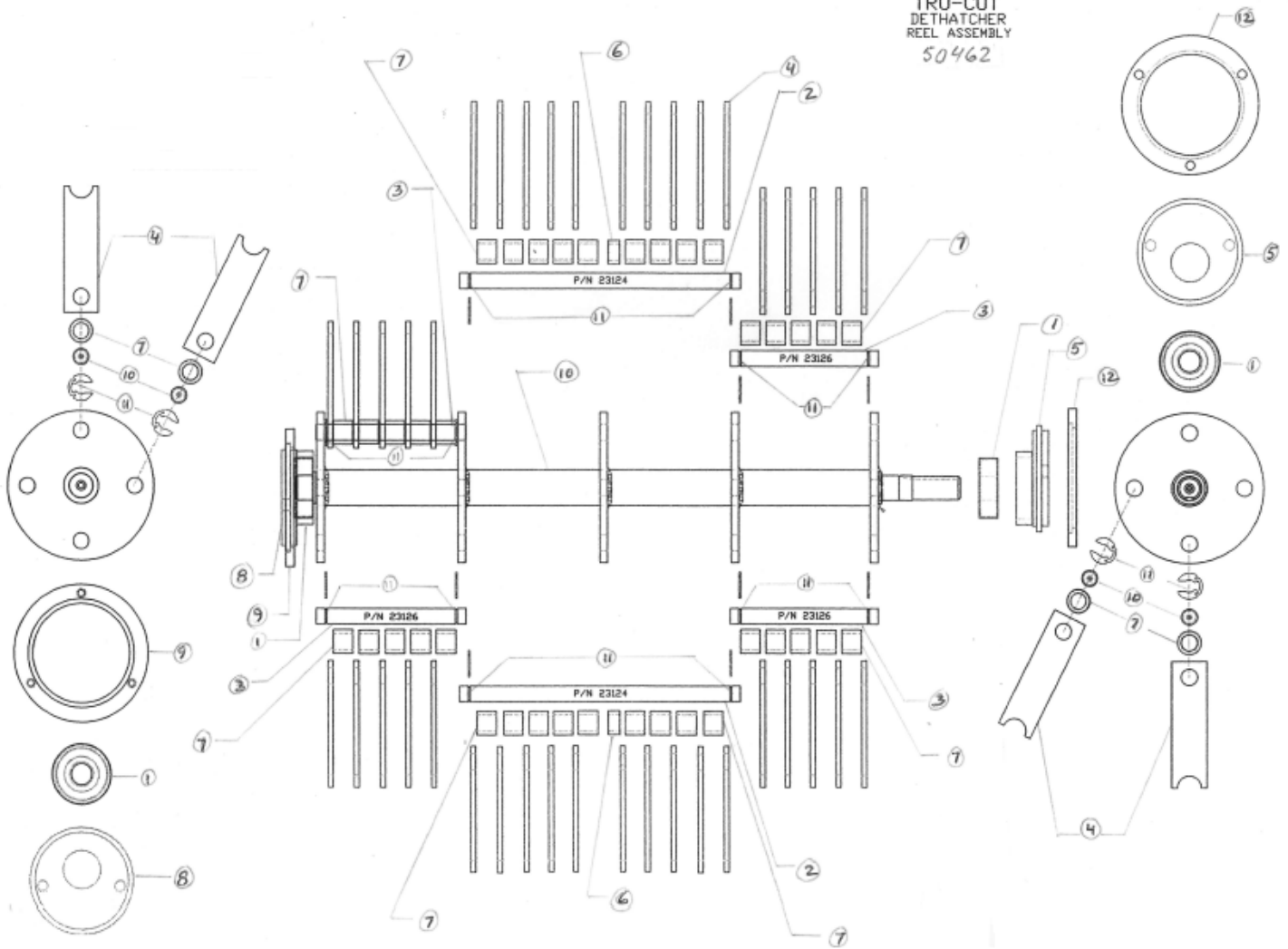
Item	Part #	Description
1	TC23124	BLADE HOLD SHAFT-LONG (2EA)
2	TC23126	BLADE HOLD SHAFT-LONG (2EA)
3	TC23128	FLAIL BLADE (42EA)
4	TC27239	SPACER(2EA)
5	TC27267	FRONT WHEEL SPACER(38EA)
6	TC47002	REAL SHAFT-PLATE WELD
7	TC90616	E RING (2EA)



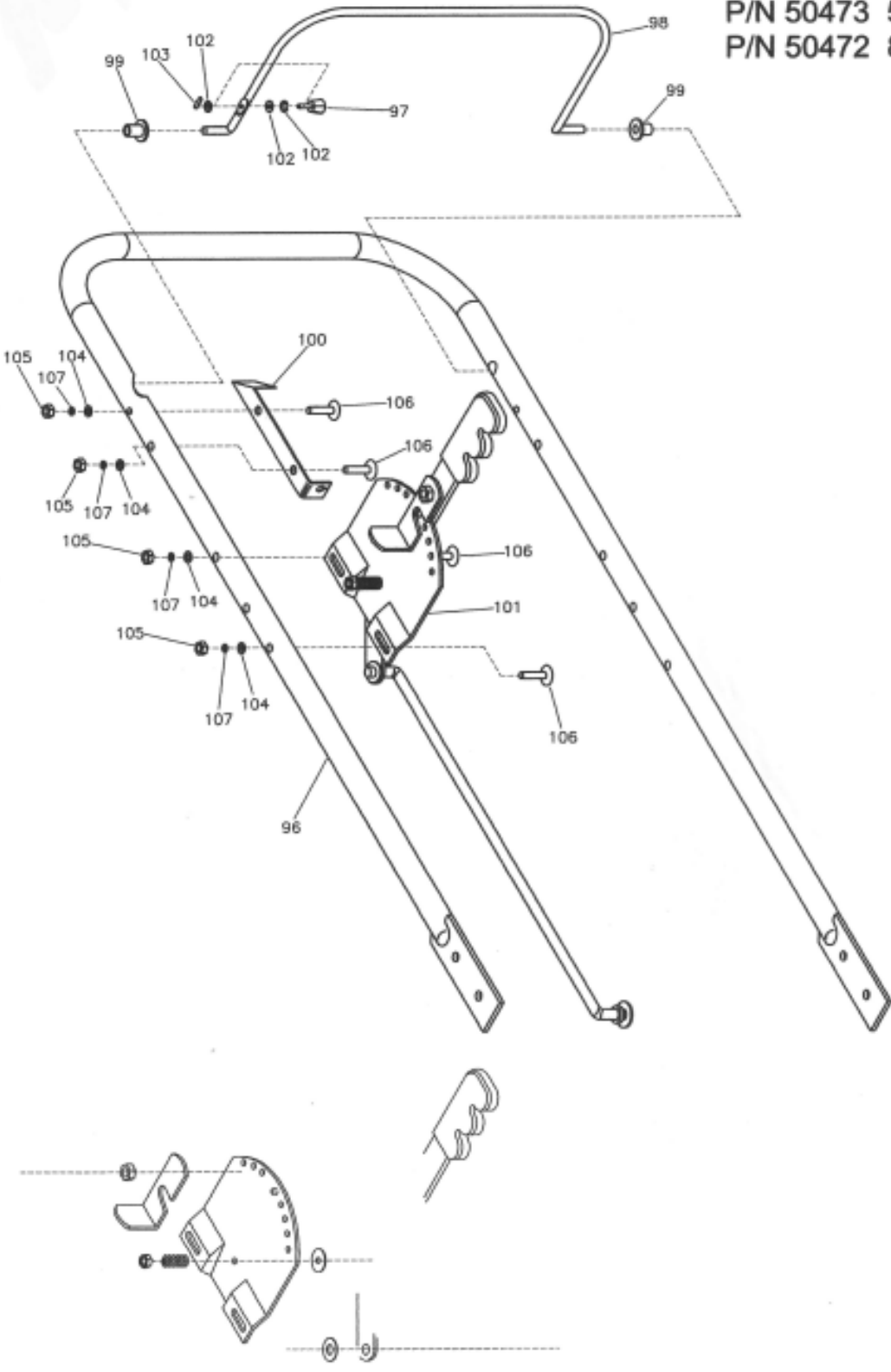
Item	Part #	Description	Item	Part #	Description
1	TC11535	REEL BEARING (2EA)	7	TC27267	FRONT WHEEL SPACER(38EA)
2	TC23124	BLADE HOLD SHAFT-LONG (2EA)	8	TC27271	BEARING RETAINER RH
3	TC23126	BLADE HOLD SHAFT-LONG (2EA)	9	TC31208	BEARING RET RING RH
4	TC23128	FLAIL BLADE (42EA)	10	TC47002	REEL SHAFT-PLATE WELD
5	TC23165	BEARING RETAINER LH	11	TC90616	E RING (12EA)
6	TC27239	SPACER (2EA)	12	TC31207	BEARING RET RING LH

□

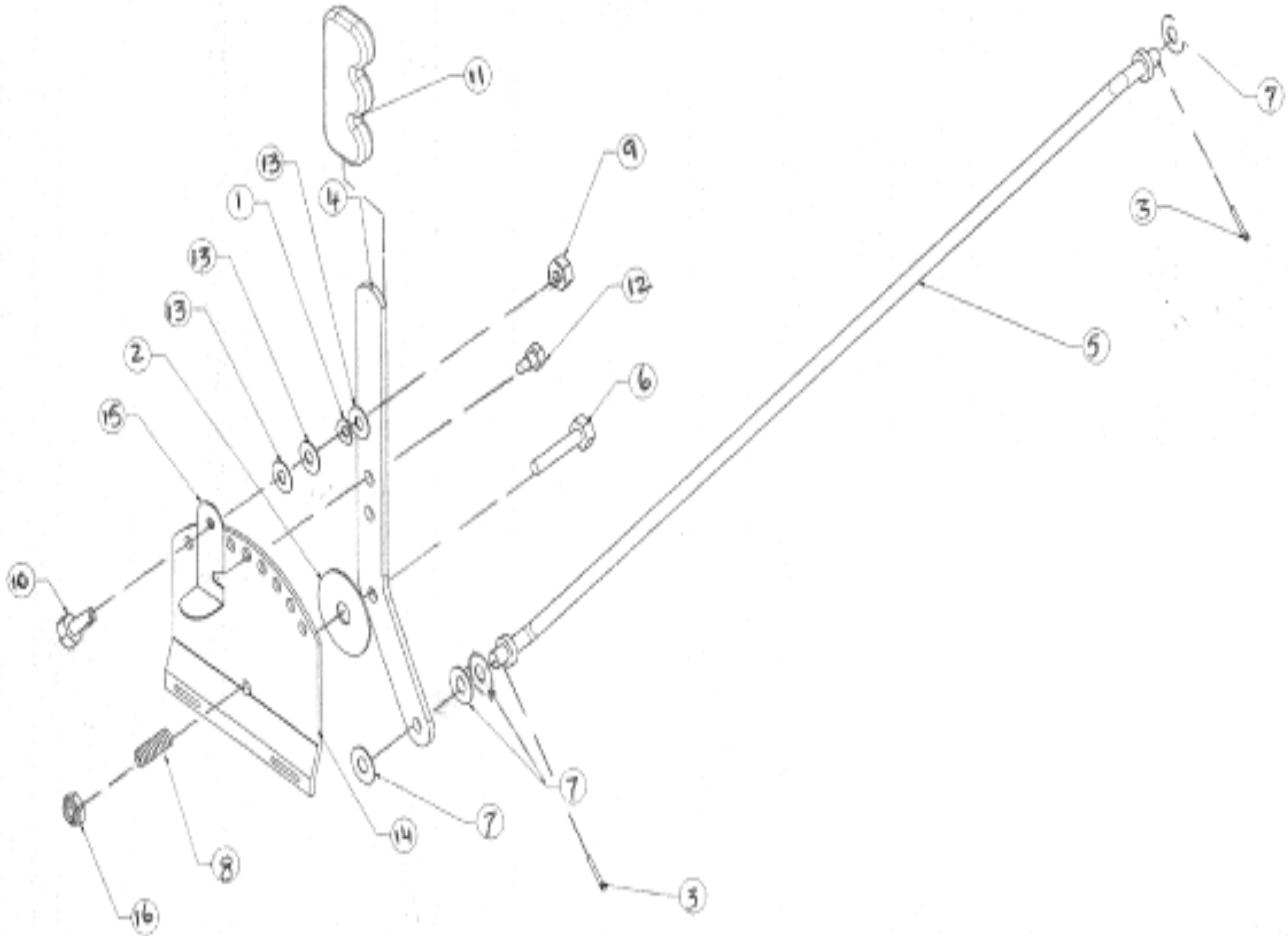
TRU-CUT
DETHATCHER
REEL ASSEMBLY
50462



HANDLE ASSEMBLY
P/N 50473 5.5 HP
P/N 50472 8 HP

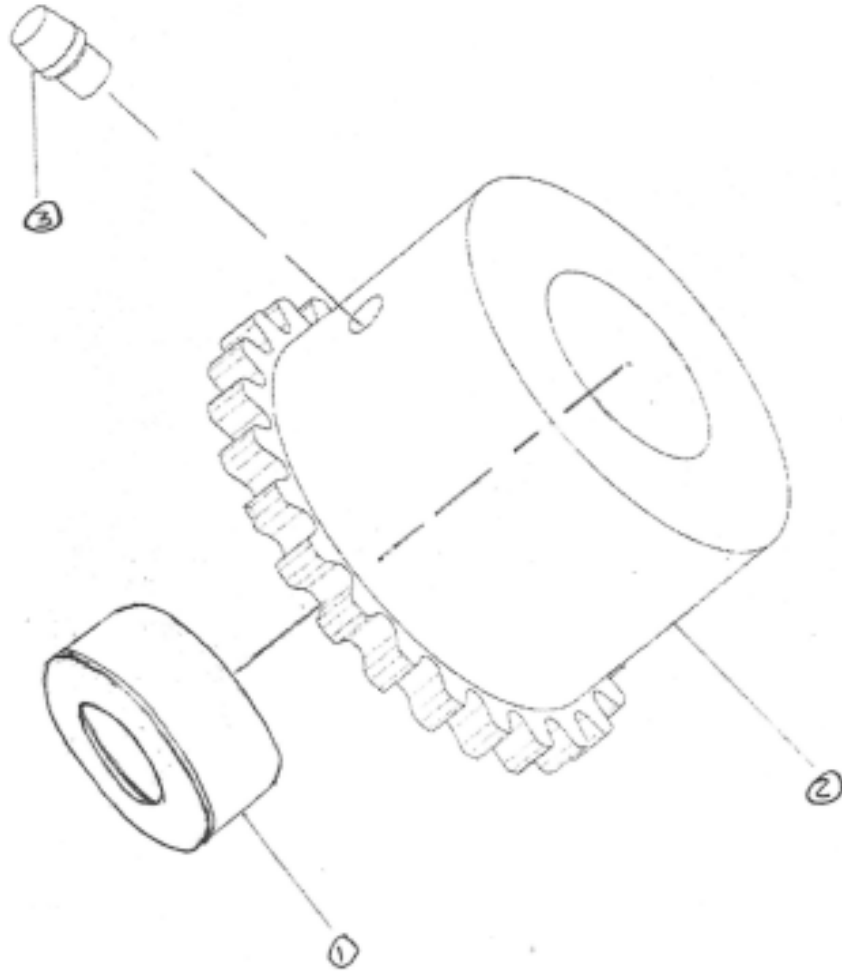


QHA CONTROL S/A



Item	Part Number	Description	Item	Part Number	Description
1	TC90226	WASHER WAVY 7/16 (1)	9	TC90537	5/16-24 CENTER LOCK NUT (1)
2	TC11491	FIBRE BLADE WASHER (1)	10	90541	5/16-24 x 3/4 HHCS GRD 5 (1)
3	TC90037	COTTER PIN (2)	11	11360	QHA GRIP (1)
4	TC23203	QA LEVER /8HP PIN 23197 (1)	12	90473	LOCK PIN (1)
5	TC11490	QUICK ADJUST ROD (1)	13	90188	5/16 SAE WASHER PLATED (3)
6	TC90370	5/16-18 x 1 3/4 HHCS PLATED (1)	14	31376	INDEX PLATE QHA (1)
7	TC90122	3/8 SAE WASHER (4)	15	23167	QHA LOCK 8HP PIN 23177
8	TC11494	SPRING (1)	16	90186	5/16-18 HLN PLTD NYLON NUT (1)

12T SPROCKET ASSEMBLY



Item	Part Number	Description
1	TC11386	DIFF. BEARING (SEALED 60010) (1)
2	TC23192	12T SPROCKET (1)
3	TC11204	ZERK FITTING 3/16 (1)